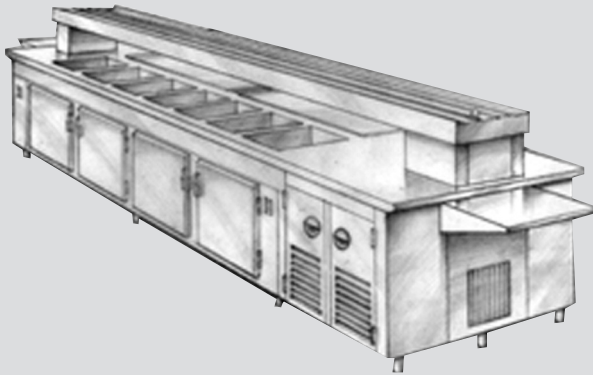


Coldveyor™ Refrigerated Conveyor



37-112-SP-AF
 Shown with Extra Cost Options

Models

□ 37-1XX-AF

XX= total length
 of conveyor

This design can be used with all cold traylines and a wide variety of trays. Pre-wired and pre-plumbed mechanical hook up is easy. Simply connect an electrical supply to the circuit breaker panel and make final connection of a 1½" drain line. The Bandveyor™ riser may be removed to allow for easy access into a building.

FEATURES

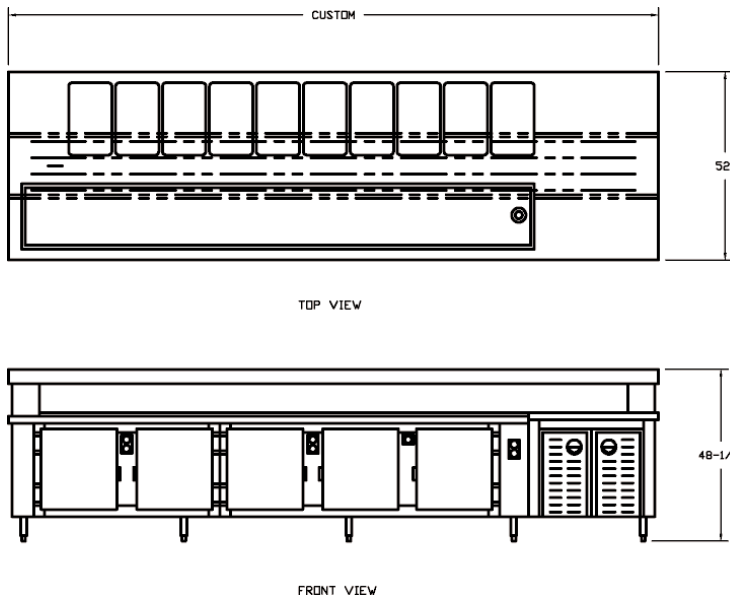
- Refrigerated storage base for 12" x 20" pans
- Refrigerated storage base for 18" x 26" sheet pans
- Tray loading shelf or tray unloading shelf
- Additional electrical outlets
- Stainless steel overshelf above bandveyor
- Second frost top in lieu of cold pan
- Second cold pan in lieu of frost top
- Optional correctional package available

PRODUCT INFORMATION

- **Construction:** Shall be stainless steel on all exposed surfaces. All exposed welds shall be ground and polished to blend with adjacent surfaces. Minimum length is 10 feet.
- **Body:** Support frame and outrigger frames are constructed of 18 gauge galvanized steel. Body is 20 gauge type 304 stainless steel.
- **Top:** Shall be 14 gauge type 304 stainless steel.
- **Shelves:** Open shelving bases are standard. Shelves shall be 18 gauge type 304 stainless steel. Shelves are 24¾" deep and provide 17½" of storage height.
- **Cold Pan:** On one side shall accept 12" x 20" x up to 6" deep pans. A drain is provided in bottom of cold pan. Refrigeration provided by self-contained, air-cooled condensing unit(s).
- **Frost Top:** Opposite Cold Pan is a frost top sized to accommodate 18" x 26" sheet pans or 13" x 18" half size sheet pans. A drain is provided in bottom of frost top. Refrigeration provided by self-contained, air-cooled condensing unit(s).
- **Bandveyor:** Shall be provided with marine edge and four FDA approved self-aligning conveyor bands. Drive motor shall be ¾ H.P. Variable speed control shall be adjustable to 30 feet per minute.

Coldveyor™ Refrigerated Conveyor

37-1XX-AF (XX=Total length of conveyor)



ELECTRICAL

120/208/1

Specify amp load, number of outlets, location of outlets and load on each outlet.

TECHNICAL SPECIFICATIONS

Model	Dimensions			Shipping Weight
	L	W	H	
37-1XX-AF	XX	52"	48½"	approx. 300 lbs. per ft.

Note: Minimum length is 10 ft.
XX = total length of Conveyor

BID SPECIFICATIONS

Provide (1) model 37-1_____ Coldveyor™ Conveyor. Unit to be 52" wide, 35" high to work surface. Bandveyor is mounted 12½" above the work surface. Length is customized to meet requirements.

Number of wells determined by length. Four (4) convenience outlets are standard.

- Two ½ h.p. refrigeration compressors are hermetically sealed, equipped with thermal overload cut-off, and mounted under the Coldveyor™ deck.
- Refrigeration system is designed to cool cold pans to 20°F surface temperature on bottom and sides with 80°F ambient. Refrigeration temperature is adjustable through a 15°F range by means of a calibrated control knob mounted on the side inset panel.
- Control group consists of On-Off master switch, dial control for variable speed drive, dial control for refrigeration temperature, indicator light for master switch On position, indicator light to indicate cycle of refrigeration compressor.
- A circuit-breaker panel is provided and is to be wired directly into power source by others.

OPTIONS

- Optimal length: specify number of pan wells required and length desired. Example: a 9 pan well is 15' long. See chart below.

No. of 12" x 20" Pan Wells	Coldveyor™ Length
7	12'
9	15'
12	18'

- Stainless steel overshef is available. It is positioned without fastening devices and is movable.
- An end shelf 24" x 18" is available, attachable to either start or take-off end of Coldveyor™ top deck. Shelves are stainless steel and are easily detached and remounted.
- Legs with leveling feet may be furnished in place of casters.
- Additional electrical outlets.
- Optional correctional package available.

